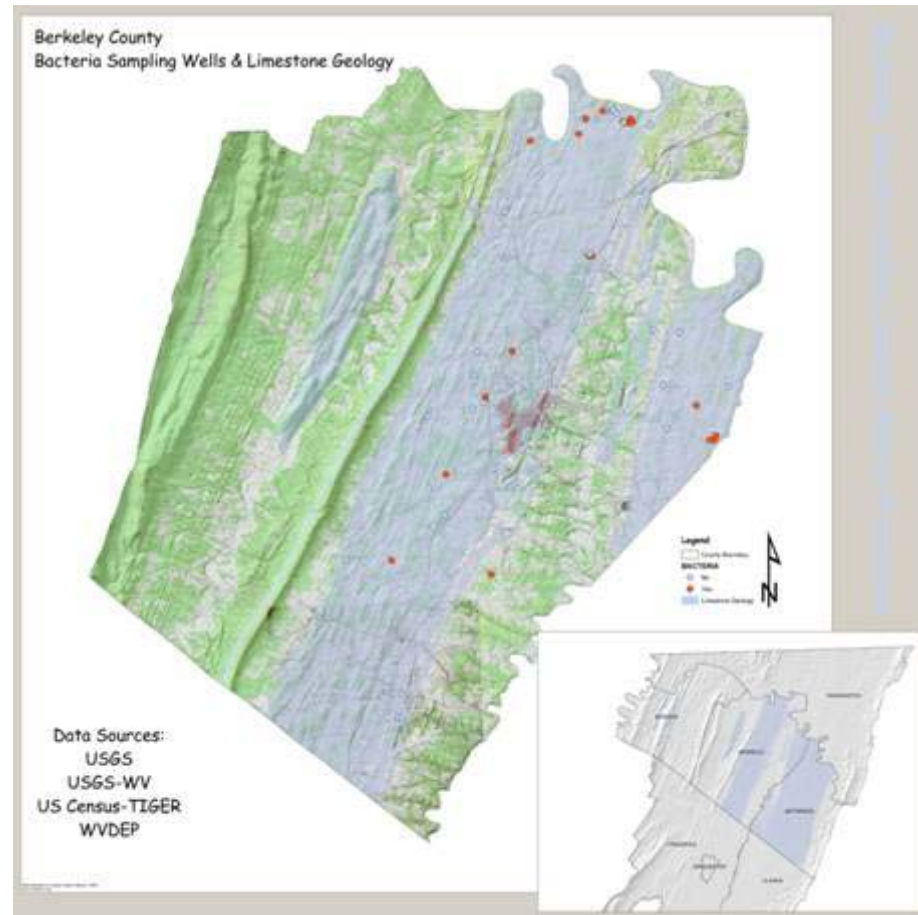
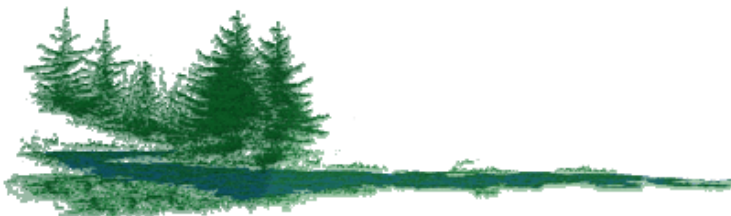


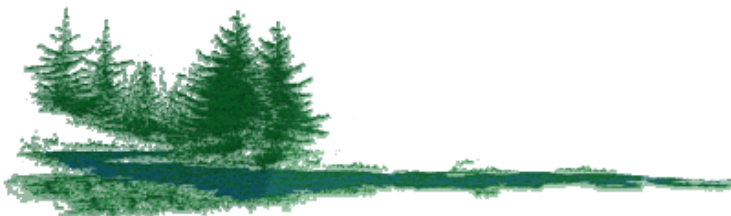
# Berkeley Co., WV Source Water Protection Task Force

- Invited into the community by an inclusive, locally led group



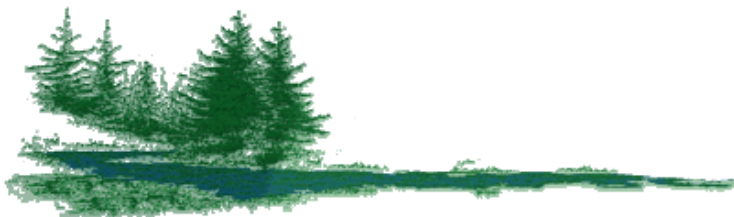
# How did the Berkeley Co. Source Water Protection Task Force start?

- County is facing rapid growth, water quality, and water quantity issues
- Needed additional support for data collection and organization building
- Asked CVI for assistance



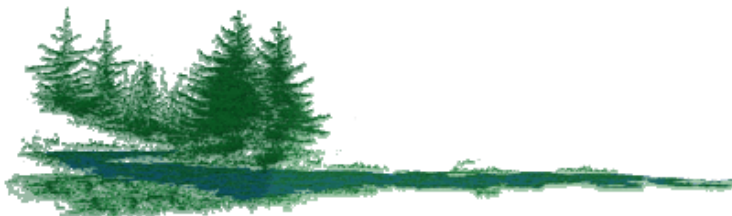
# Outreach

- Facilitate planning meetings and interagency cooperation
- Strengthening organizational capacity



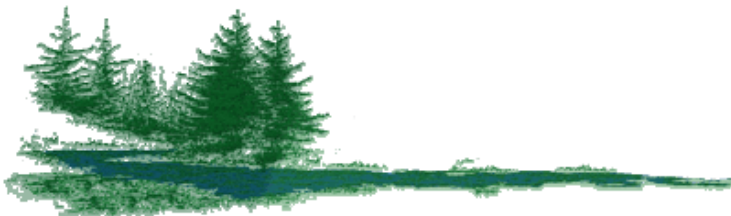
# Education

- Sponsored Conservation Design Workshop



# Science and Technology

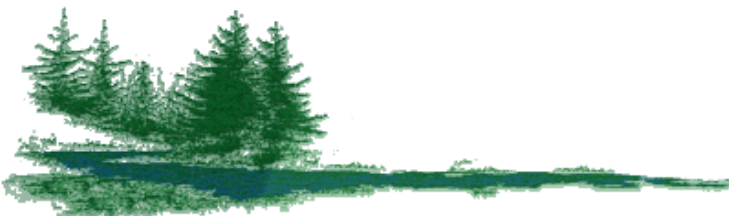
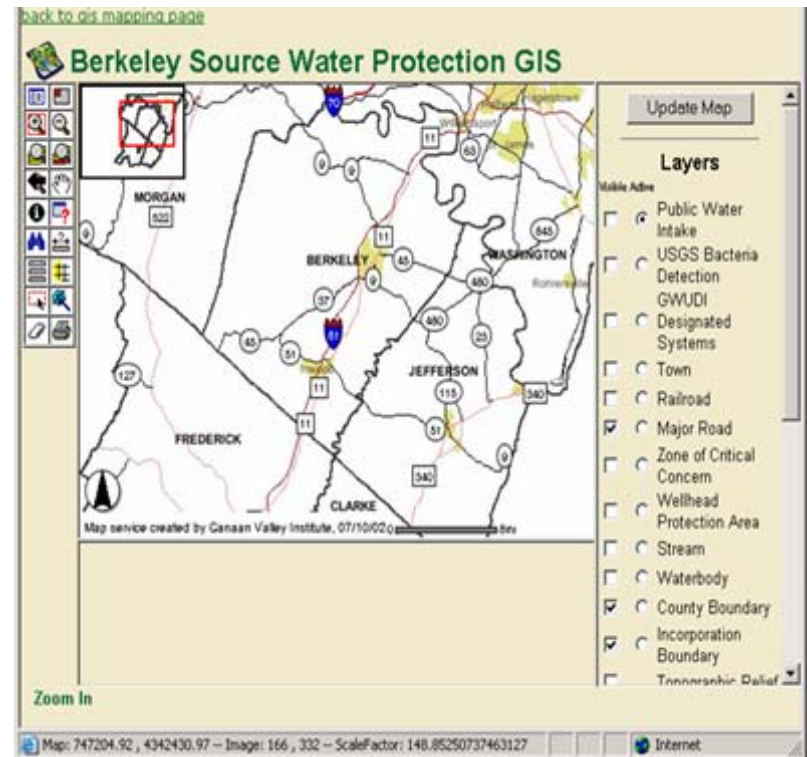
- Gather federal, state, county information
- Created Berkeley Source Water Protection GIS
- Provided technical assistance including USGS IPA





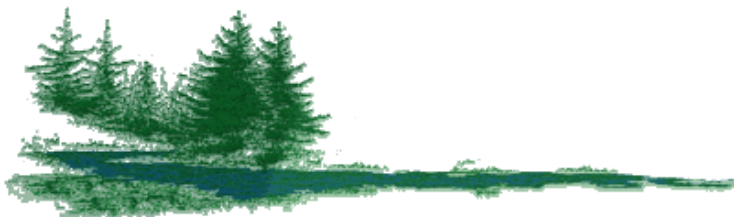
# Operations

- Database hosting for web-based GIS



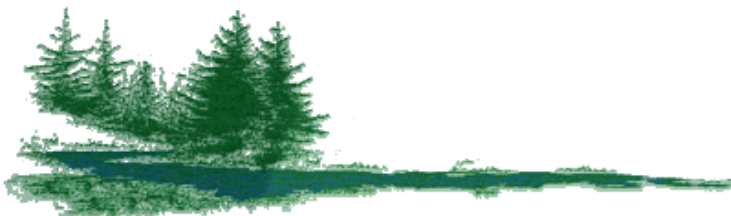
# Outcomes

- Plan for protection by early 2004
- Establishing long-term advisory board
- Public education campaign initiated



# Association's Sustainability

- Berkeley County is a model for unified source water protection for the state



In Appreciation of Your  
Source Water Protection Efforts



**EPA REGION III**